



# Social Services and Education Data Partnerships in Washington State

Melissa Beard, Data Governance Coordinator

APHSA-National Workgroup on Integration Annual Meeting

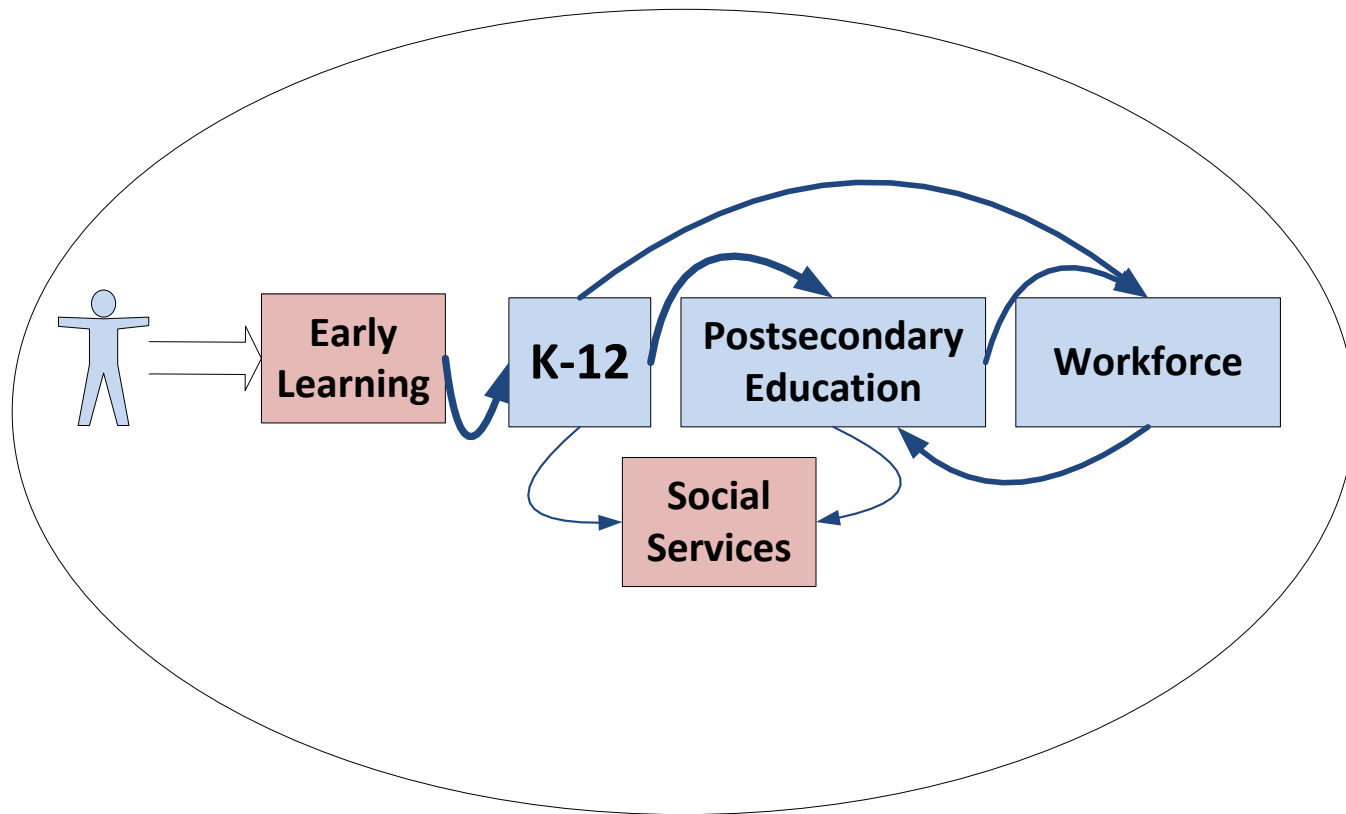
April 17, 2015

“So many things are possible just as long as you don’t know they’re impossible.”

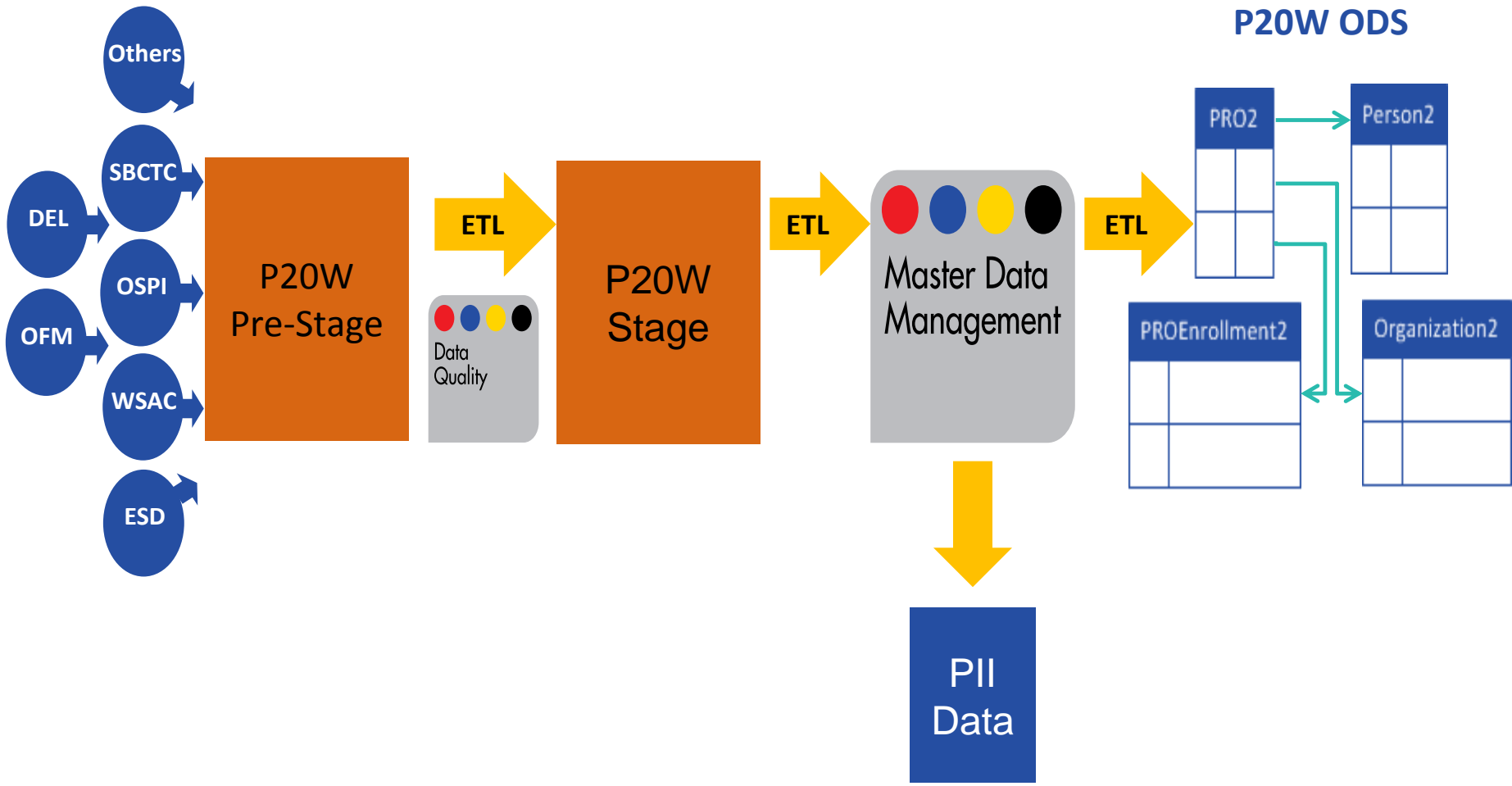
- The Phantom Tollbooth, Norton Juster

# ERDC created in statute in 2007

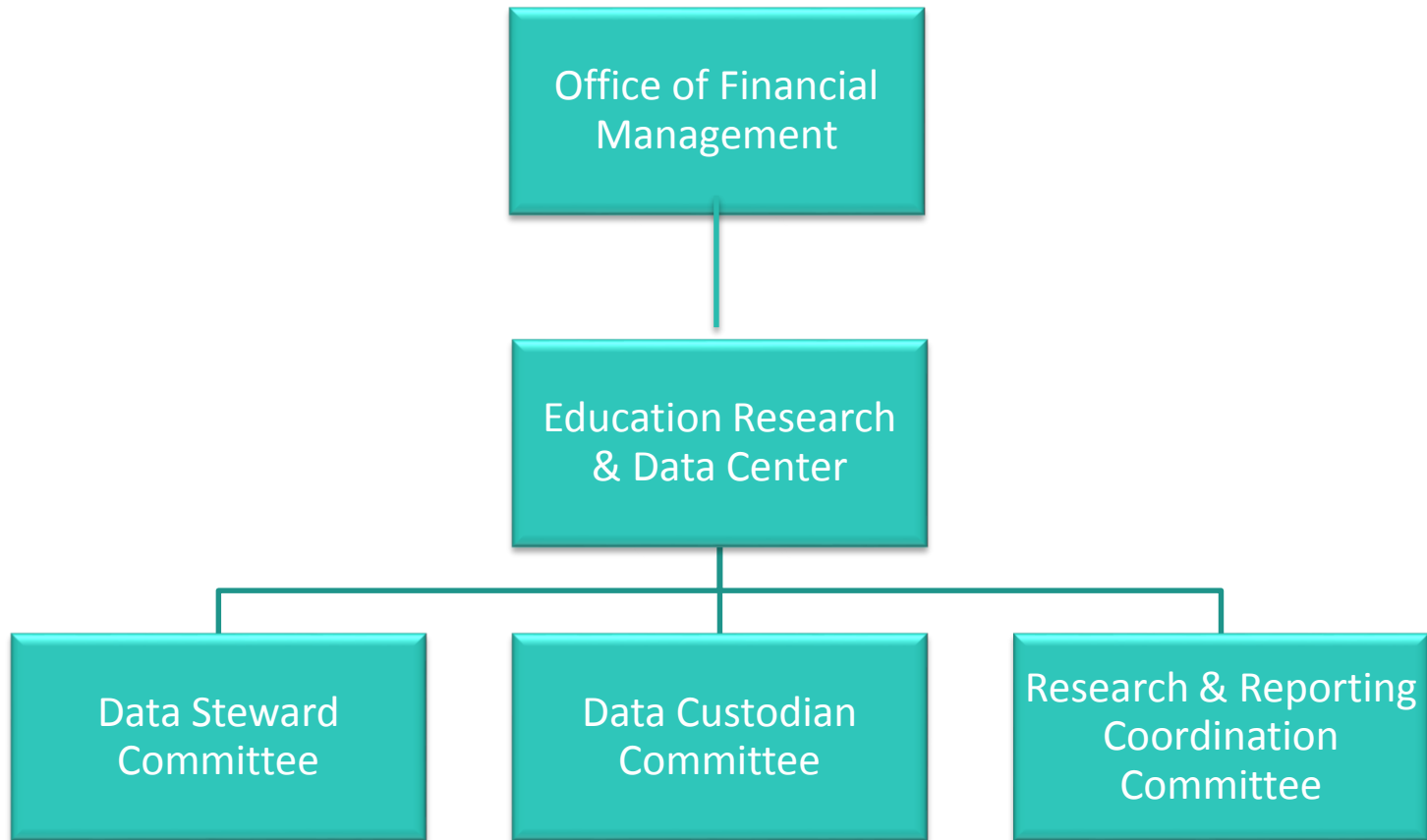
Mission: To develop longitudinal information spanning the early learning through workforce system in order to facilitate analyses, provide meaningful reports, collaborate on education research, and share data.



# Washington's Technical Solution



# Data Governance Structure



# Education Research and Data Center

- ARRA-funded grant of \$17 million from Dept of Education in 2009
  - Included \$1 million to state social services agency's research division for projects focusing on educational outcomes of their participants (<http://www.dshs.wa.gov/sesa/rda/research-reports>)
- Research data, not to be used for interventions because of data timing

# Accomplishments

- Created a de-identified database of linked social services and education data
  - ERDC holds the crosswalk of identities
  - DSHS holds the data linked by a research ID
- DSHS completed nine research projects
- Entering into agreements with individual programs (Economic Services Administration)

# Challenges

- RDA integrates the data from across the agency but cannot share the data
- Education agencies not allowed access to the database
- Data spread across many different offices and need to create relationships with each office to get data



# Reasons given to not share data

- “Data not clean.”
- “You don’t understand our data.”
- “You can’t protect our data.”
- Unspoken: Fear of what the data will reveal

# Lessons Learned

- Identify research questions first
- Start small
- Create a decision-making structure up front
- Understand that everyone wants something out of the partnership
- Involve problem-solvers

# Questions?

Melissa Beard  
State of Washington  
Office of Financial Management

[Melissa.beard@ofm.wa.gov](mailto:Melissa.beard@ofm.wa.gov)

360-902-0584

[www.erd.c.wa.gov](http://www.erd.c.wa.gov)

